



Unit : mm

- Accessories :  Screw (Ø4x27mm) - 4 pcs  
 White plastic wall plugs (Ø7.5x25mm) - 4 pcs

Model	Voltage (V)	Frequency (Hz)	Power Consumption (W)	Air Flow (m3/h)	Weight (g)
BVN10A001	100-240	50-60	1.7	100	630



# ventilation fan / Wall Exhaust Fan

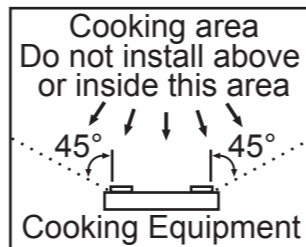
## Installation and Operating Instructions



**MODEL BVN10A001**

GENERAL SAFETY INFORMATION

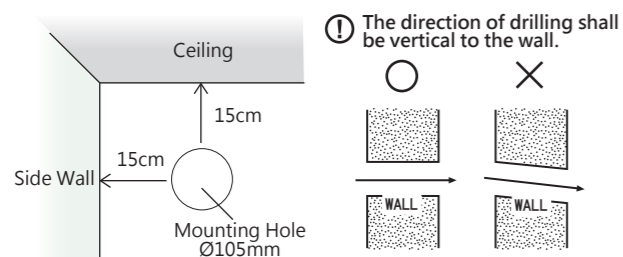
- Follow all local electrical and safety codes.
- Protect the power cord from sharp edges, oil, grease, hot surfaces, chemicals or other objects.
- These ventilating fans are intended for residential usage only.
- Always disconnect the power source before working on or near the ventilating fan, motor or junction box.
- Installation should be completed by a qualified personnel.
- Please assemble correctly to avoid abnormal sounds or resonance.
- Installation using methods other than those specified in this manual are prohibited.
- Do not install these ventilating fans on ceilings.
- Do not install in areas accessible by flames.
- Do not mount over heating sources such as cooking equipment (see Fig. A), or in places with temperatures over 40°C.
- 100V - 240V Available.
- For installation in humid environments (such as the bathroom), please install a leakage circuit breaker, and set the switch outside the bathroom.
- The bottom of the unit must be installed 2.3 meters or more above the ground.
- No water pipes are allowed to pass through or above the product and 2 m around it.
- In case of gas leakage, Do Not turn on this device.
- This device shall not be operated or maintained by children or inexperienced individuals.
- This product is to be used for normal ventilation only. Usage for ventilation of hazardous or explosive gases is prohibited.
- This device must not be mounted in places with or near noxious or hazardous gases to prevent undesirable/hazardous gases from flowing backwards into the room.
- (for EU region) This appliance can be used by children aged from 8 years and above and persons with reduced physical, sensory or mental capabilities or lack of experience and knowledge if they have been given supervision or instruction concerning use of the appliance in a safe way and understand the hazards involved.
- (for EU region) Children shall not play with the appliance.
- (for EU region) Cleaning and user maintenance shall not be made by children without supervision.
- (for other than EU region) The appliance is not to be used by persons (including children) with reduced physical, sensory or mental capabilities, or lack of experience and knowledge, unless they have been given supervision or instruction.
- (for other than EU region) Children being supervised not to play with the appliance.
- Please use this appliance only at altitude of 2,000 meters below.



INSTALLATIONS-Wall

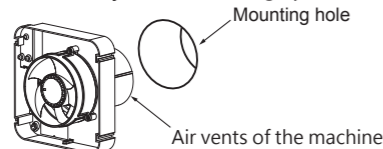
1. Use a wall drill to open up a Ø105mm on the mounting hole position; A distance of 15 cm or more is required from the edge of the paper mold to the ceiling and each side of the wall.

- The installation hole cannot be opened on i-beams, pillars, or bearing walls. This will endanger the building's structure. It must also avoid electric wires inside the wall.
- The internal aperture surface is suggested to apply waterproof resin coating (Waterproof sealer) after drilling the wall. Install ventilation fan when the surface is fully dry and solid.
- If a pre-installed PVC pipe is used as the installation hole, it is necessary to ensure the full circumference of the PVC pipe is bigger than 102mm after cement grouting.

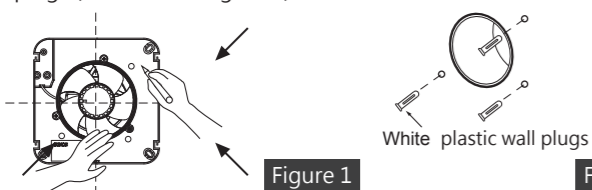


2. Measure the depth of the mounting hole on the wall and install the Air vents of the machine into it.

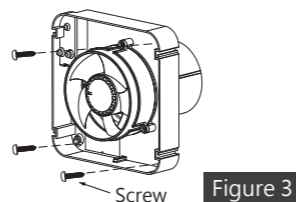
- The "terminal" of the body should be facing upward.



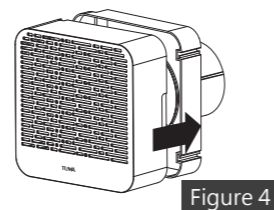
3. Based on the indication of arrows of Figure 1, mark the position of the four screw holes on to the wall and then remove the body. Drill a hole with a width of Ø6mm and a depth of 30mm or above on to the marked positions, and fasten the white plastic wall plugs (as shown in Figure 2).



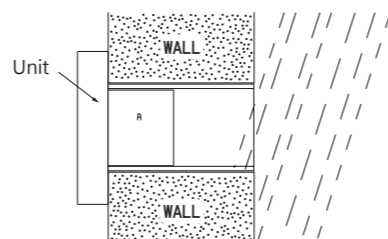
4. Put the air vents of the machine into the plastic tube of the mounted hole, let it lay flat against the wall, and use the mounted screws within the accessory pack to install it onto the plastic wall plugs (as shown in Figure 3).



5. Please follow the electrical wiring diagram of this manual to connect wires and test its operation to check for abnormal vibration and sound. After confirmation, the panel can be attached to the body and tightened along the four sides of the panel (as shown in Figure 4).



6. Please confirm whether the product will be subjected to direct wind and rain. If that is the case, a commercially available 4-inch rain cover is recommended to be installed at the pipe outlet.



INSTALLATIONS- Windows

- Please choose: Glass installation of 3~4mm in width, and minimum area of 250×250mm or more.
- Drill out a Ø105mm mounting hole in the glass.(as shown in Figure 5)
- \* Due to the different strengths of commercially available glass, it is recommended that the drilling be performed by professional technicians. If the glass has slight cracks after drilling, do not continue the installation.
- After applying foam glue to the body(as shown in Figure 6), fix it on to the force glass. Ensure the edge between the pipe and the glass is sealed and airtight with silicon.(as shown in Figure 7)
- Please follow the electrical wiring diagram of this manual in connecting to the power and test its operation for abnormal vibrations and sounds. After checking, the panel can be fastened to the body and tightened along the four sides of the panel. (as shown in Figure 8)

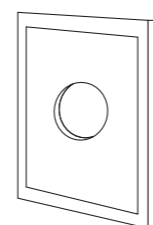


Figure 5

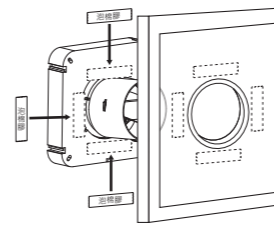


Figure 6

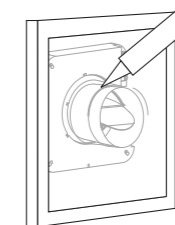


Figure 7

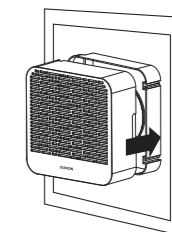
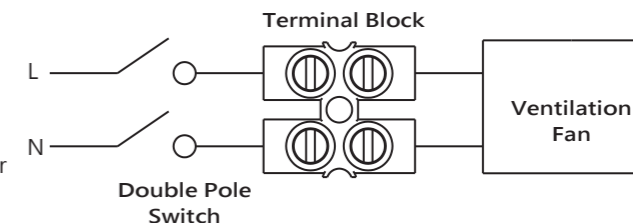


Figure 8

⚠ Please install this appliance on glass with eaves, please switch off this appliance to avoid product damage when weather conditions are unfavorable, e.g. heavy wind, heavy rain or typhoons.

Connect wiring

- Please follow the electrical wiring in accordance with local electrical codes.
- Install the power switch which outside the bathroom.
- Please follow the wiring diagram figure to connect all wiring installation.
- The installation must be provided with a double pole isolator switch having a contact separation of not less than 3 mm.



Cleaning and maintenance

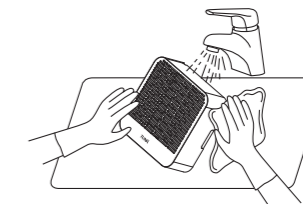


⚠ Always disconnect the power source before working on or cleaning the product!

- Always disconnect the power source before working on or cleaning the product!
- Do not use a gasoline, toluene, decontamination powder or other chemicals to wipe the ventilation fan.
- To prevent deformation and discoloration, do not clean the plastic components with liquid or detergent above 60 °C.
- To avoid malfunction or electric shocks, do not spray water on electrical components such as the motor.
- Regular maintenance on an annually basis is recommended to ensure the ventilation fan can still operate normally.
- To avoid danger, if the flexible wire is damaged, its replacement should be conducted by professionals of the manufacturer, personnel from the manufacturers maintenance department or other similar departments.

Cleaning Method (monthly cleaning is recommended)

- First remove the outer cover, wash the outer cover with water, then wipe it with a dry cloth or let it dry in a cool place.



- When the power has been disconnected, please use the cleaning tool to remove dirt on the ventilation fan. (as shown in Figure 9)
- Use a clean soft cloth and kitchen detergent to wipe dirt off the ventilation fan, and reinstall the cover. (as shown in Figure 10)

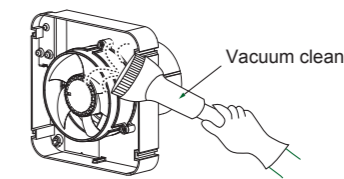


Figure 9

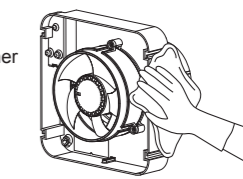


Figure 10